



Inventory Barcode (I/B) Operation

For Sage 300 (formerly ACCPAC)

The Solution

For trading / wholesales / distribution companies, inventory transaction occurs in every business area. Starting from customer orders to purchase orders to goods shipments, each step consists of multiple stock in/out records. A simple and reliable inventory system is needed to automate all these transactions.

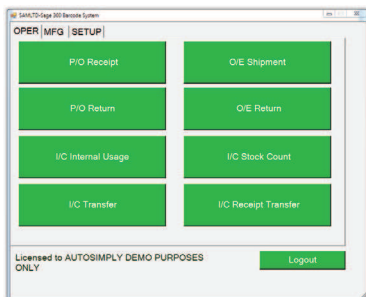
AutoSimply Inventory Barcode (I/B) module is an easy to use plug-in barcode system designed for small to medium-size trading companies.

How it works

Inventory Barcode (I/B) is developed with 100% Sage 300 SDK and uses the latest Web Service Technology. All transactions are posted real-time via the Sage 300 application server.

Designed to be a single system, I/B uses the same I/C and M/F tables and views. No separate data synchronization is needed and therefore prevents any inventory balance discrepancy within the system.

In using Microsoft Internet Web Service (IIS) as gateway, this allows IB to support warehouse to shop floor and backoffice real-time update with no geographical limitation.



With I/B, all shipments, receipts, returns and transfers could now be recorded by handheld scanner devices and posted real-time to the backend Sage 300 system. It supports inventory management with:-

- Multiple Warehouse Location
- Items with Serial and Lot tracking
- Location Bin tracking

Main Feature

• Barcode P/O

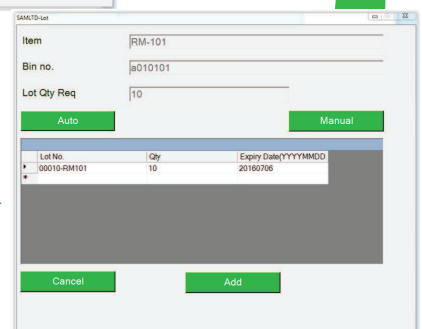
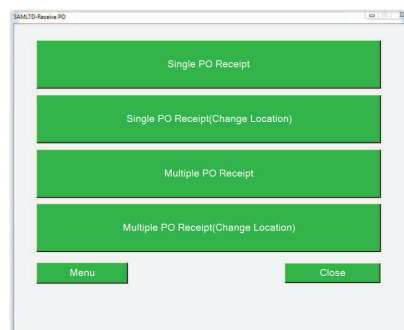
The Barcode P/O module includes P/O Receipts and Returns Entries. Using a handheld scanner, users can need only to scan the PO number, scan the item numbers to be received and input the receipt quantity. I/B even allows users to receive items from multiple PO's at the same time.

For purchase returns, users need only scan the Receipt number and scan item numbers which need to be returned and then input return quantities.

• Barcode O/E

The Barcode O/E module includes O/E Shipment and Return Entries. Using a handheld scanner, users need only scan the sales order (SO) number to be processed and then scan individual item lines to input shipment quantity.

For sales returns or shipment adjustment, I/B supports the posting of Shipment Returns and Invoice Returns. Users need only scan the shipment number or the invoice number, scan the items to be returned and input the return quantity.



• Barcode I/C

Barcode I/C includes I/C Internal Usage, I/C Transfer and I/C Physical Inventory transactions. Users need only to scan the item number and input the quantity in order to scrap, transfer or conduct periodic physical counts.

• Supports Lot/Serialized Items

Fully integrated with Sage 300, AutoSimply I/B supports lot/serialized item tracking. This requires the deployment of I/C Lot/Serial module.

• Supports Bin Tracking

Locations in I/C can be divided into bins for a more detailed inventory management. AutoSimply I/B is fully integrated with Orchid's Bin Tracking module. User need only to scan the appropriate bin numbers during entry of transactions.

• Barcode User and Security

Barcode users can be created in I/B with specific security rights. Each function in the I/B interface can be assigned to each user.

The screenshot shows the 'SAM3TD-Serial' window. At the top, 'Item' is set to 'RM-103' and 'Serial Qty Req' is '24'. There are 'Auto' and 'Manual' buttons. Below is a list of serial numbers: RM103-01125, RM103-01126, RM103-01127, RM103-01128, RM103-01129, RM103-01130, RM103-01131, RM103-01132, RM103-01133, and RM103-01134. At the bottom are 'Cancel' and 'Add' buttons.

The screenshot shows the 'SAM3TD-Receive PO - Item List' window. 'PO No.' is 'po15', 'Item' is 'rm101', and 'Loc' is '1'. Below is a table with columns 'Item', 'PO Qty', and 'Rec Qty'. At the bottom are 'Post' and 'Cancel' buttons.

Item	PO Qty	Rec Qty
RM-101	12	0
RM-102	24	0
RM-103	36	0
RM-201	12	0
RM-202	24	0
RM-203	36	0

Benefits

► **ROI \$** : Inventory Barcode (I/B) generates real savings in terms of time and costs for every warehouse transaction that the backoffice and warehouse needs to process. The more transactions processed, the more savings generated.

► **Time Saver** : By implementing I/B, duplicate processes between the backoffice and the warehouse are eliminated. Scanning of barcodes also enhances the speed of transaction processing across the entire warehouse.

► **Accurate Inventory** : With I/B, all inventory in/out movements are recorded by scanning the physical barcode. Correct item transactions are recorded against the matching documents. All transactions are posted real-time all the time.

► **Better Communication** : The use of I/B streamlines communication between backoffices and warehouses. Information is relayed electronically instead of telefaxes and computer printouts.

► **Customer Satisfaction** : With the use of barcodes, I/B minimizes the chance of incorrect inventory receipts, shipments and transfers. Scanning of barcodes also greatly enhances the speed of order processing leading to on-time deliveries.

► **Light, Plug-In Solution** : After setting up the Web Service environment, users just need to install I/B on their chosen hardware and immediately start using it.

Summary of Main Features:

- Single or Multiple P/O Receipt Entry
- P/O Return Entry
- Single or Multiple O/E Shipment Entry
- O/E Shipment and Invoice Return Entry
- I/C Internal Usage
- I/C Physical Inventory
- I/C Transfers
- Supports Items with Serialized/Lot and Expiry date *
- Supports Location Bin Tracking **

*Require Sage 300 Serialized and Lot Module

** Require Orchid Bin Tracking Module

Requirement Checklist

- Sage 300 I/C, O/E, P/O 6.1 or later
- Requires one (1) Sage 300 Lanpak for Connection
- For Barcode Scanners - Windows CE 6.0 or Windows Mobile 6.0 or later; at least 2.8" touch screen; supported display resolutions: VGA, QVGA, WVGA, WQVGA
- For Tablets – Full Windows OS
- WIFI connection to the Sage 300 Application Server
- Barcode printers for label printing



Authorized Partner

AutoSimply Company Limited

© 2015 AutoSimply Company Ltd. All rights reserved. AutoSimply Software, AutoSimply Software logos, and all AutoSimply product and service names are registered trademarks of AutoSimply Company Ltd., or its affiliated entities. All other trademarks are the property of their respective owners. © Sage 300 ERP is registered trademarks of Sage Software, Inc.

aces

sage 300 ERP



1167 CLF Bldg.
Chino Roces Ave.
San Antonio Village, Makati City



+ 632 8542-6549 / + 632 8584-7090
09213452482 / 09175384979



GET IN TOUCH
WITH US



info@aces.com.ph
hr@aces.com.ph
support@aces.com.ph